

Hunter Yacht Motors



Reminder:

Once you have the motor engaged the vessel is under power you must give way to sailing craft and you no longer have priority over motor boats

The boats are fitted with lithium batteries to provide up to 9 hours between charges, a fast charger with suitable cable and a folding propeller. Running on full power reduces the range considerably.

Performance (indicative only – not a guarantee)

	Speed in mph	Range in miles	Running time in hours
Slow	3.0	28	9
Full throttle	5.8	12	1¾

The installations vary between boats because developments are being introduced frequently. Boats will either have a key, a magnetic key or an on-off button.

The system is fitted with safety devices so that the batteries cannot be damaged by running flat: there is also a read-out showing the exact battery status and the remaining range under the prevailing conditions.

The idea is that the motor will be used to get off a lee shore or in places where it is difficult to sail, eg the wooded sections of the River Ant, the bungalow sections of the River Thurne or Meadow Dyke. The installation is NOT intended for prolonged motoring – after all, the Hunter boats are provided for sailing!

The Yard does hold a spare set of batteries if absolutely necessary but an extra charge will be incurred should these need to be brought out and fitted.

Ensure no loose ropes are trailing in the water which could get entangled in the propeller.

Safety:

Keep the companionway hatch closed if it is raining or there is possibility of spray or other water ingress.

The battery isolator switch should only be used if an emergency requires all power to be turned off or if the engine is not being used for a prolonged period. It is mounted in the forward cabin of 2- and 3-berth boats and in the companion way of 4-berth boats -



H-class - forward of the wash basin in the forward cabin



W-class – behind the toilet in the forward cabin



L-class - behind the companion way ladder

The magnetic key should be kept away from heart pacemakers and credit cards.

Further safety instructions are on the last page of this booklet.

Operation:

The motor can only be started if the emergency stop button is pulled out (or magnetic key is in position) and the throttle is in the central (neutral) position.

Starting -

Ensure the Emergency Off button is not depressed

Ensure the Remote Throttle is in the neutral position

Turn the On/Off Key or press the button to start the system – the display switches on and the LED lights up



End -

Move the Remote Throttle lever to neutral

Turn off the complete system using the On/Off Key or button

The Display Panel:

Left buttons - scroll up and down

Top right – confirm selection

Bottom right – back

LED lights show green for throttle active and red for system error.



The display scrolls through:

- Speed over ground

- Remaining range or journey time (under current conditions)

- Battery charge state

- Present power consumption

- Overview of engine speed, torque and power

- Overview of speed, range and power consumption

The battery charge state in percentage is always visible

Switching batteries off:

Press and hold on/off button for more than 5 seconds until 'OFF' flashes on the screen. The batteries will turn off automatically after 48 hours of non-use.

The batteries cannot be charged when turned off.

It is recommended that the batteries are turned off at night and when not being used.

Instructions on charging batteries:

The On/Off Key or switch must be turned on at the start of charging but can be turned off once charging has started.



2-berth boats



3-berth boats



4-berth boats

H-Class - The shore-power box is on the starboard side at the front of the forward cabin.

W-Class - The shore-power box is on the port side of the forward cabin

L-Class - The shore-power box is on the port side at the front of the main cabin.

Plug the shore power cable into the socket on box ensuring that the flap on the plug fits fully into the recess on the socket.

Lead the cable through the porthole or window before connecting to the power supply point. Check the polarity (do not use if the light shows a fault). The box also includes a circuit breaker.



Switch on the batteries if not already on. The batteries cannot be charged if turned off.

During charging the LED light on the charger will light up red and will change to green when the charging process is finished.

The charging system will automatically cut the power when the batteries are fully charged.

When the charger is in use, protect it and batteries from contact with water and allow adequate ventilation – make sure coats are not hanging too close and that the companion way hatch is shut.

Disconnecting the charger:

Unplug from the supply and turn off at the shore power box. To remove the plug from the shore power box, press down on the blue lever while pulling out the plug.



Places to charge:

As well as the advertise Broads Authority moorings with electric power points (which invariable are taken up early by motor cruisers) the Yard has arranged that Hunter boats can charge batteries at

Eastwood Whelpton	Upton Dyke	(River Bure)
Richardson's Boatyard	Stalham	(River Ant)
Martham Boats	Martham	(River Thurne)
Oliver's Holidays	Martham Ferry	(River Thurne)

other charging facilities are listed in the 'Green Book' (in the boat information pack)

Broads Authority Electric Charging Points:

The electric charging points are now operated with contactless cards costing £1 from outlets throughout the Broads. The meters indicate where to hold your card in order to transfer the credit to the meter. The cards are for single use only.

Charging points and card outlets

Places with charging points are shown in bold on the left, followed by card outlets within the same town or village, or the nearest card outlets. (Map below)

Northern Rivers:

- **Coltishall** / Mace Post Office
- **Dilham** / Sutton Staithe Boatyard; Simpson's Boatyard, Stalham
- **Great Yarmouth** / Yacht Station*
- **Horning** / Ferry Marina; Tidings Newsagents
- **Hoveton** / Broads Information Centre*; Norfolk Marine Chandlers
- **Irstead** / Toad Hole Cottage (How Hill)*; Sutton Staithe Boatyard; Simpson's Boatyard, Stalham
- **Neatishead** / White House Stores
- **Potter Heigham** / Herbert Woods; Ferry Marina, Horning; Tidings Newsagents, Horning
- **Ranworth** / Granary Stores & Tea Shop
- **Stokesby** / Dunes River Café, Acle Bridge
- **Sutton** / Sutton Staithe Boatyard; Simpson's Boatyard, Stalham

* During summer season

Southern Rivers:

- **Bramerton** / Broom Boats, Brundall; Norfolk Yacht Agency, Brundall
- **Hardley** / Hardley Windmill Trust*; New Inn, Rockland
- **Loddon** / Bridge Stores
- **Norwich** / Yacht Station*; Broads Authority, Yare House
- **Rockland** / New Inn; Post Office
- **Reedham** / Yacht Station*

- **Somerleyton** / Goodchild Marine, Burgh Castle
- **St Olaves** / Goodchild Marine, Burgh Castle
- **Whitlingham** / Visitor Centre

* During summer season

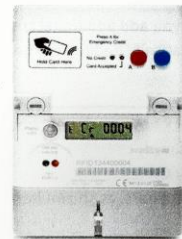
Instructions for using the Broads Authority meters:



RFID pre-payment card meter - Understanding your meter

How do I know what my credit balance is?

Your remaining credit balance is clearly indicated on the green LCD display after the letters 'Cr'



How do I add credit to my meter?

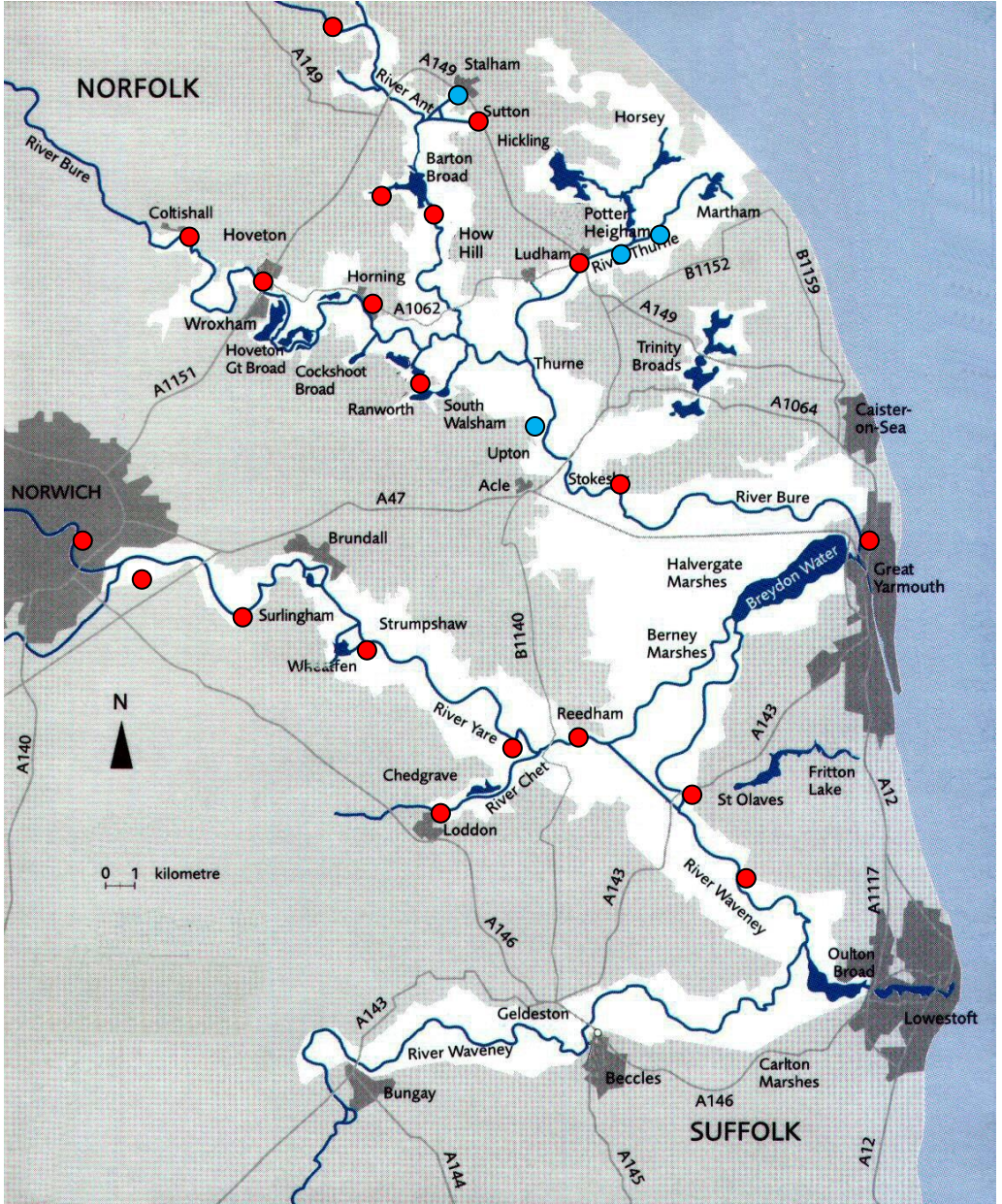


Simply hold a valid card with credit up against the top of the meter where you see the above symbol. The prepaid credit from your card will then be transferred to your meter

The small green LED will light up and the green LCD display will indicate that the card has been accepted by the meter showing the message 'CARD' followed by the amount of credit added - your updated balance will then be displayed

Note: These cards are single use only. If use of a card is attempted more than once, the small red LED will light up and the green LCD will display 'no CrEd'

Electric Charging Points



- Broads Authority Electric Charging Points
- Other Charging Facilities

1. Important safety and operating instructions



DANGER

This symbol indicates danger of injury to yourself or others.

Torqueedo motors are designed to operate safely and reliably when they are used according to the operating manual. Please read this manual carefully before you start the motor. Ignoring these instructions can cause property damage or personal injury. Torqueedo accepts no liability for any damage caused by actions that contradict this operating manual.

To ensure safe operation of your Cruise FP:

- Danger to life due to a disabled manoeuvrability of the boat! Inform yourself about the navigated area and pay attention to weather forecast before you start. Please hold typical security equipment on the boat regardless the size (anchor, paddle, communication devices, if necessary auxiliary drive).
- Check the status and function of the POD system (including emergency stop switch) before each use.
- The electronics box may be hot.
- Please be aware that range displays use GPS and real-time power consumption data to calculate remaining range. Changes to the direction of travel, currents and wind directions may significantly affect the actual remaining range.
- If you are running the motor at full throttle in high ambient temperatures, the motor may reduce speed automatically to reduce battery temperature, indicated by a blinking thermometer symbol on the display. (temperature protection mode)
- Familiarize yourself with all the motor controls. For instance, you should be able to stop the motor quickly if necessary.
- Only allow adults who have been instructed on how to operate the motor to run it.
- Follow the boat manufacturer's instructions regarding horsepower, capacity or other limitations.
- Stop the motor immediately if someone goes overboard.
- Never operate the motor if someone is in the water close to the boat.